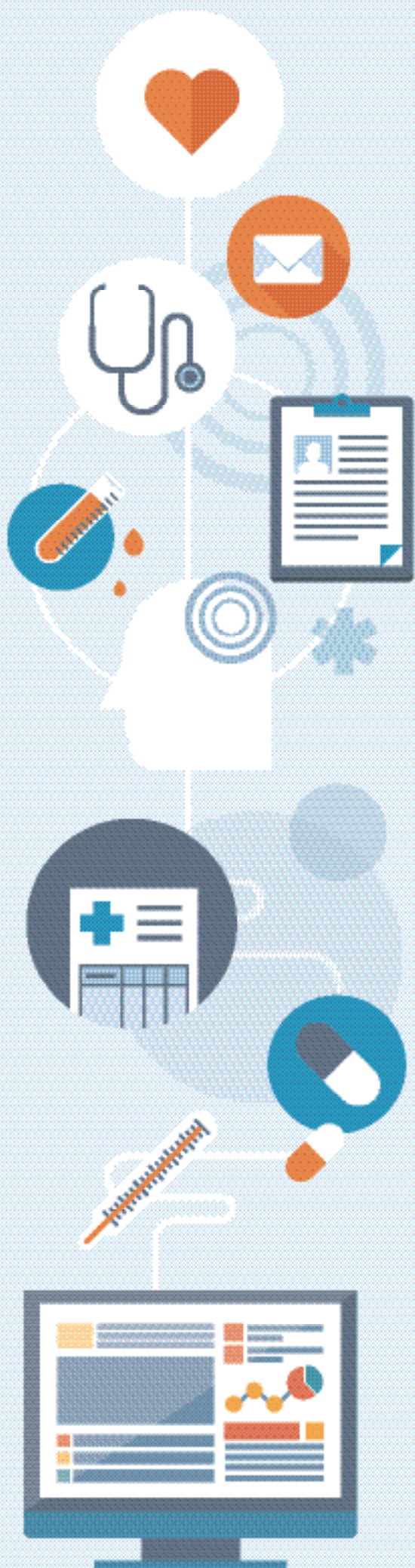


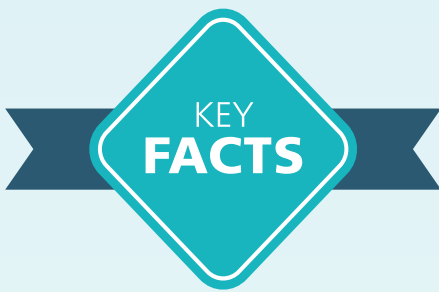
A teal diamond shape with a white border, containing the text 'KEY FACTS' in white, set against a dark blue ribbon background.

KEY
FACTS

The Local Care Record

- ✓ sharing electronic patient records safely and quickly
- ✓ connecting local hospitals, community services and GPs
- ✓ improving care and experience





✓ **Your GP and hospital already share information with each other**

Your GP and hospital already share information with each other to help provide you with the right care and treatment. This happens in a number of ways – letters, phone calls, fax or email - which can be slow. The Local Care Record speeds up this process and allows care staff in south east London to provide you with quicker, safer and better care.

✓ **Sharing your information will help to improve the care you receive**

To provide the best treatment and support care professionals need access to the most up-to-date information about you. This information can be from a range of services including hospitals, community services and your GP practice, and might include things like your test results and the medicines you are taking. Therefore, sharing information between these services will allow the people that are supporting you to make better decisions and work with you more effectively.

✓ **Your information is secure**

Your information can only be accessed over a secure healthcare network and by staff that are directly supporting your care and treatment. By law, people working in or on behalf of the NHS or as part of NHS healthcare teams must respect your privacy and keep all information about you safe.

✓ **Not everyone can see your record**

Only staff directly involved in your care will be permitted to view your record.

✓ **Your records will not get sold to insurance or research companies**

Your personal information will never be shared with or sold to insurance or research companies.

✓ **The Government will not use the Local Care Record to make decisions about you**

Your information is only ever used for direct care and is only available to local hospitals, community services, your GP Practice and professionals working within those organisations, through the Local Care Record. Your personal information is not shared with any other government organisation.

✓ **Your records will not sit on a national database somewhere**

The Local Care Record is not a database; it is a view only portal.

Your information remains in the place where it is originally created (such as your GP or hospital) and will only ever be viewed through a secure online portal when it will help improve your care.

✓ **You do have a choice about this**

Allowing your information to be shared between your local care providers will benefit you. If you wish for your information not to be shared then please speak to your GP, care professional,

call **020 7188 8801** or email **gst-tr.GSTPALS@nhs.net**

You can also visit the King's Health Partners website - **www.kingshealthpartners.org/localcarerecord**